



Making and Applying a Quilt Sleeve to a Quilt by Barb Scoggin, CCQG member 8-23-2023

1. For entering a quilt show: Cut sleeve fabric 9 inches x the width of your quilt minus 2 inches.

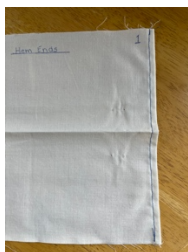
For hanging at home: Depending on the type of rod you are using in the sleeve, you may not need to cut it to 9 inches. (The 9-inch figure is for the larger hanging poles used for the quilt show at the fairgrounds.) Measure the circumference of your rod to decide how long to cut your fabric. Cut the width of your fabric two inches shorter than the width of quilt.

2. Turn under a generous 1/4 inch on the short sides of the strip and sew it down.
3. With wrong sides together, sew 1/4 inch seam along the LONG side.
Refold the tube so the seam is centered in the back. Press the seam open.
- 4A. Refold the sleeve to the original position, and on the folded side, sew a line of long basting stitches 1/2 inch from the fold.
- 4B. Refold so both seams are in the middle of the tube.
5. Center the sleeve on the quilt just below the binding.

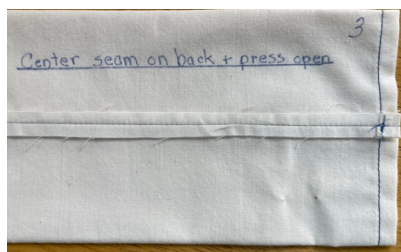
If you are attaching a temporary sleeve for use at the quilt show: For large quilts, measure 90 inches up from the bottom of the quilt. Attach the top of the sleeve at that 90 inch point so the quilt does not touch the floor when hung at the show.

You may want to put on a permanent sleeve for small quilts that you do not intend to show/hang at the quilt show. One option is to place the sleeve along the raw edge of your quilt and sew it on at the same time you sew the binding on. Then whip stitch the bottom of the sleeve down (see step 6)

6. Whip stitch the top and bottom edges of the sleeve to the quilt, being careful not to go through the front of the quilt.
7. Also, whip stitch the back half the short ends to the quilt, leaving the front open so the hanging pole can be inserted into the sleeve.
8. At this point, take out the basting thread from Step 4. It was there to provide room for the display pole to fit into sleeve without causing the quilt to curve towards the back of the display pole so the quilt will hang straight.
9. If attaching the temporary sleeve to the quilt: You may use up to 1/2 inch length whip stitches, so they're easier to remove later. Just keep your whip stitches even so that the weight of the quilt is evenly distributed along the whole sleeve. Your hanging sleeve will not be considered by the judge.



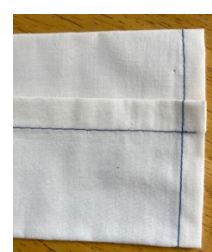
Step 1 & 2



Step 3



4A



4B



5-6-7